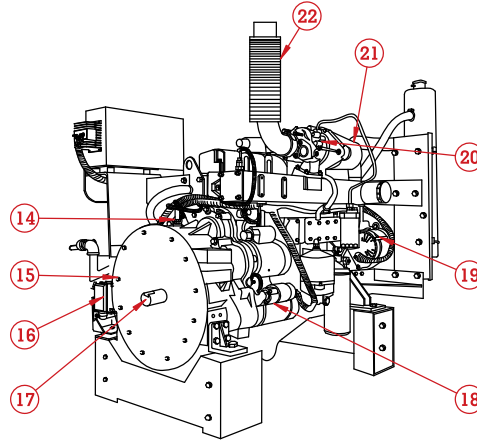
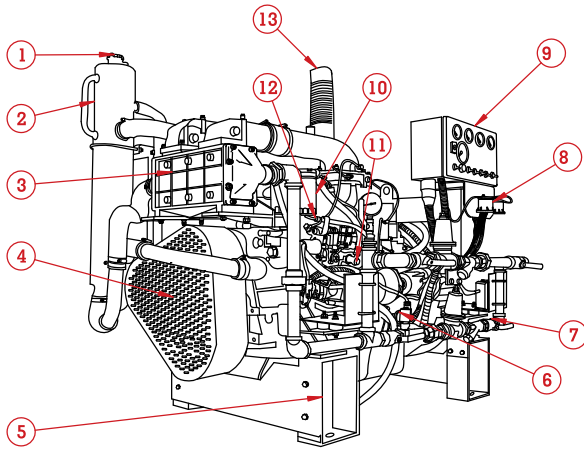


209 HP DIESEL ENGINE



Heat Exchanger Cooled, Turbocharged
7.12 Liter, 6 Cylinder Engine



MATERIAL FEATURES & DETAILS

- | | |
|-------------------------------|-------------------------------|
| 1. coolant cap | 16. automatic heater assembly |
| 2. heat exchanger assembly | 17. stub shaft |
| 3. after cooler | 18. starter motor |
| 4. engine pulley guard | 19. alternator |
| 5. engine footings | 20. turbo charger |
| 6. oil pressure sensor | 21. air filter |
| 7. cooling loop | 22. exhaust muffler |
| 8. battery starter solenoid | |
| 9. instrumentation panel | |
| 10. fuel filter | |
| 11. fuel feed pump | |
| 12. oil dipstick | |
| 13. exhaust outlet connection | |
| 14. magnetic pickup | |
| 15. flywheel housing | |

MODEL FC 6250-UL

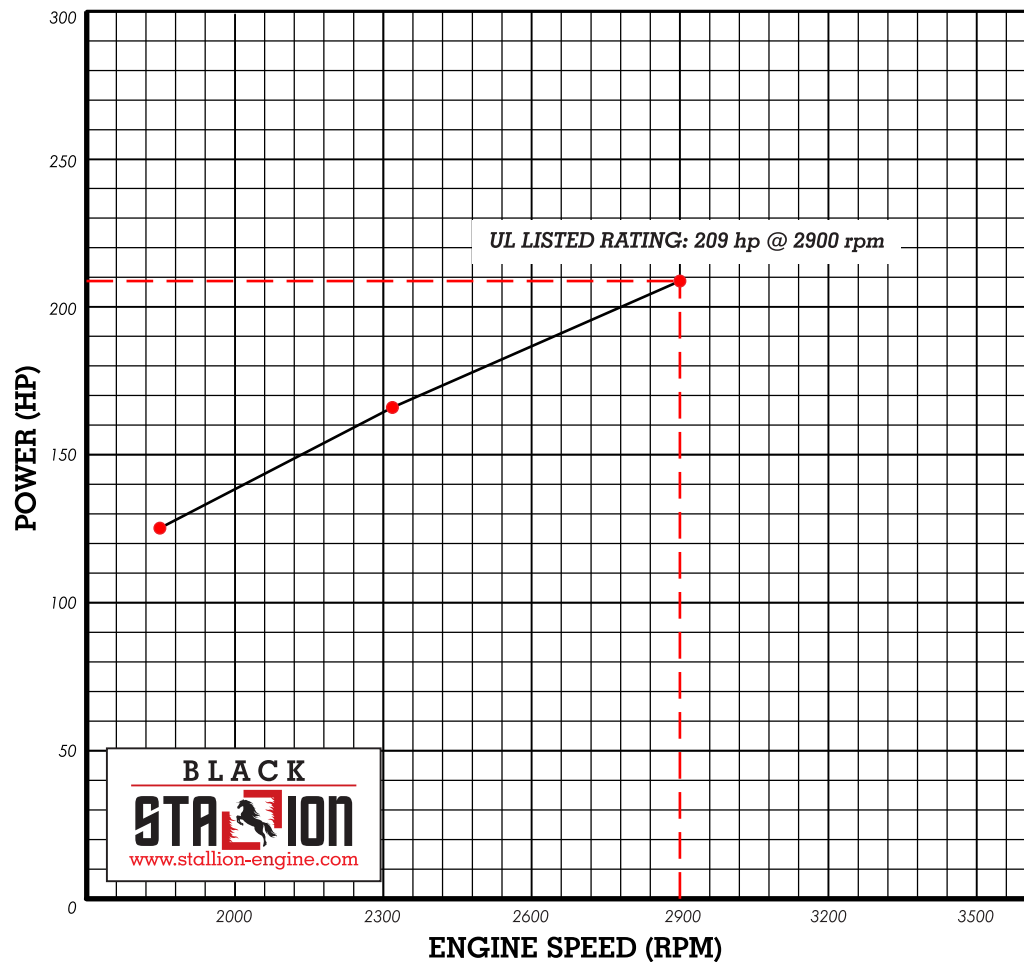
ITEM	DESCRIPTION
Air Filter	Disposable, Dry Type
Alternator	28V, 45 Amps
Coupling	Stub Shaft
Fuel Connections	Flexible, Supply and Return Lines
Fuel Filter	Spin-On Type
Fuel Injection System	In-line type, Gear Driven
Engine Heater	230V-AC, 2250 Watts
Governor Speed	Constant Speed, Mechanical
Heat Exchanger	Water to Water, Shell to Tube type
Instrumentation Panel	Tachometer, Hourmeter, Water Temperature, Oil Pressure and Two (2) Voltmeters
Lube Oil Filter	Spin-On Type
Manual Start Control	On Instrument Panel
Overspeed Control	Electronic with Reset and Test on Instrument Panel
Raw Water Solenoid Operation	Automatic from Fire Pump Controller and from Engine Instrument Panel
Stop Solenoid	24V-DC Energized to Stop
Starters	TWO (2) 24VDC
Throttle Control	Adjustable Speed Control



MODEL FC 6250-UL

Heat Exchanger Cooled, Turbocharged
7.12 Liter, 6 Cylinder Engine
209 HP Diesel Engine

PERFORMANCE CURVE



NOTE:
FOR USE IN FIRE PUMP APPLICATIONS ONLY.

ENGINE SPECIFICATION

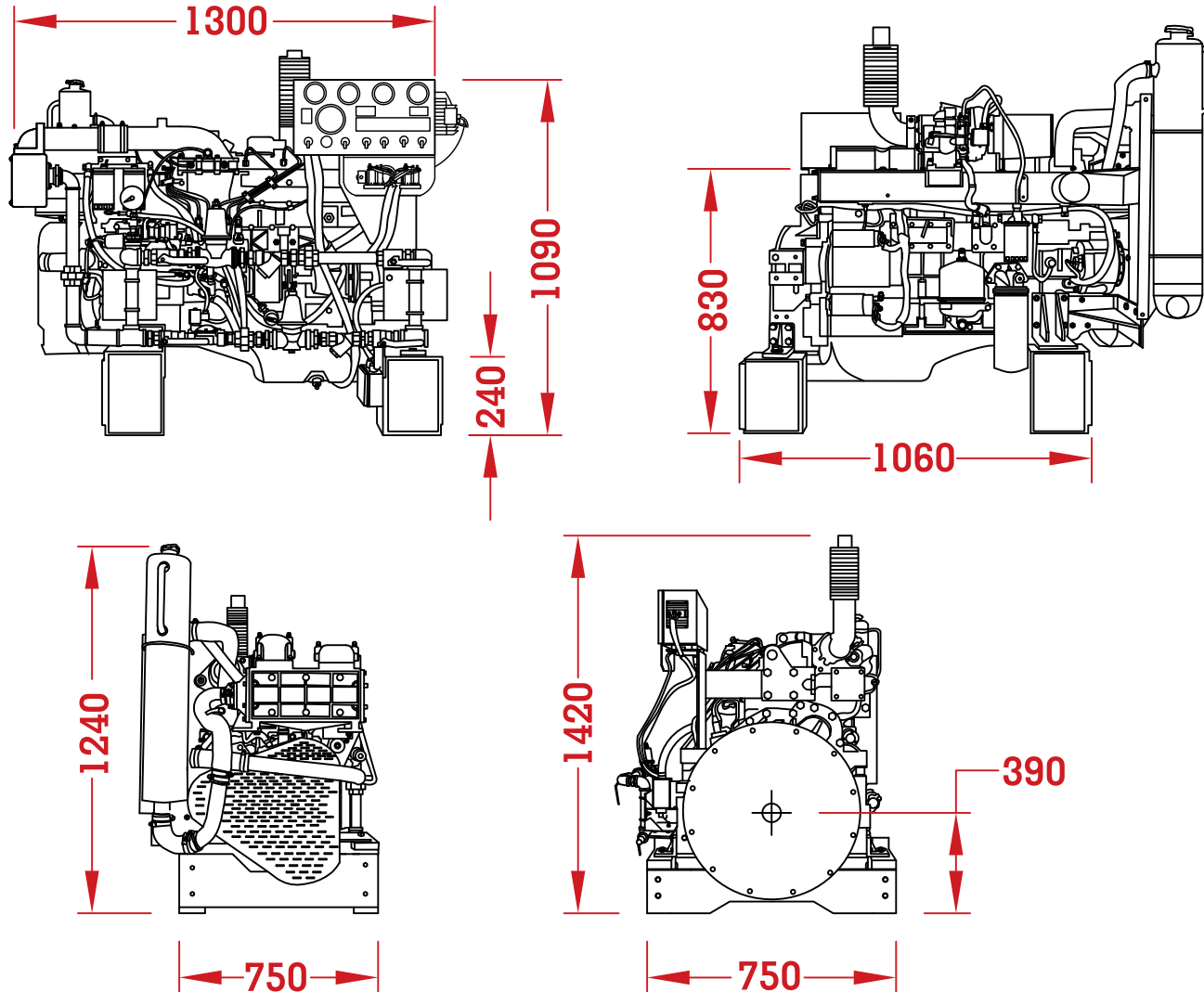
ITEM	DESCRIPTION
Speed	2900 RPM
Rated Power	209 HP
Number of Cylinders	6
Aspiration	Turbocharged
Rotation*	Clockwise
Weight – kg (lb)	869kg. (1915.82 lb)
Dimensions L x B x H	1500 mm x 940 mm x 1050 mm
Compression Ratio	16.8 : 1
Displacement	7.127 L
Engine Type	4 Stroke Cycle - Inline Construction
Bore & Stroke	110 mm X 125 mm
Fuel Consumption	49.8901 Kg./Hr
Voltage	24 VOLTS
Exhaust Temperature	≤ 480°C
Back Pressure	Not more than 15 Kpa
Raw Water Inlet Size	1 inch
Max. Raw Water Pressure	60 psi
Min. Raw Water Flow	40 gpm
Water Jacket Heater Size	2250 W, 240 VAC

* ROTATION VIEWED FROM FRONT OF ENGINE

- Each engine is factory tested to verify power and performance.
- Engines are to be used for stationary emergency standby fire pump service only.
- Engines are to be tested in accordance with NFPA 25.
- Engines are rated at standard SAE conditions of 29.61 in. (752.1 mm) Hg barometer and 77°F (25°C) inlet air temperature [approximates 300 ft (91.4 m) above sea level] by the testing laboratory (see SAE Standard J 1349).
- A deduction of 3 percent from engine horsepower rating at standard SAE conditions shall be made for diesel engines for each 1000 ft. (305 m) altitude above 300 ft. (91.4 m)
- A deduction of 1 percent from engine horsepower rating as corrected to standard SAE conditions shall be made for diesel engines for every 10°F (5.6°C) above 77°F (25°C) ambient temperature.

MODEL FC 6250-UL

Heat Exchanger Cooled, Turbocharged
7.12 Liter, 6 Cylinder Engine
209 HP Diesel Engine



NOMENCLATURE	FC 6250 - UL		
	STALLION BASE MODEL	NO. OF CYLINDERS	UL LISTED

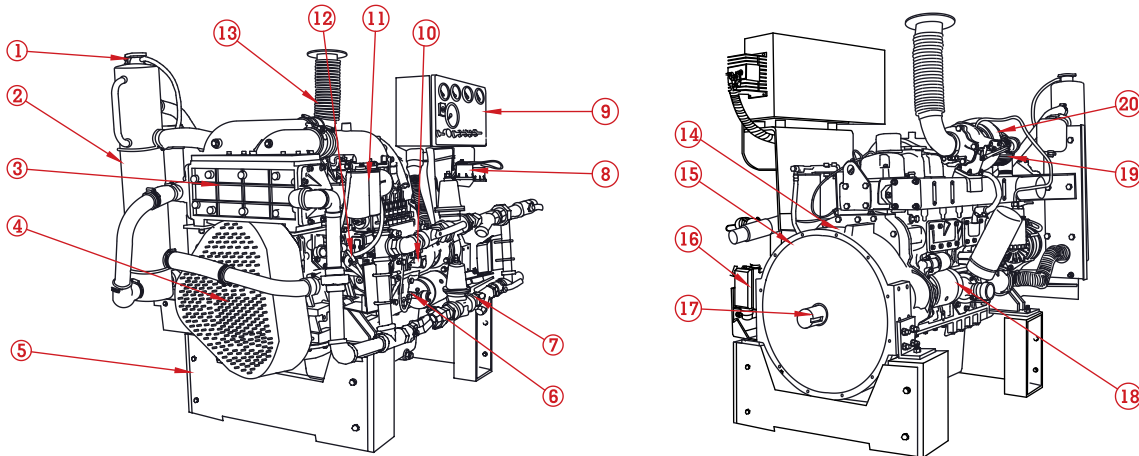
BLACK
STALLION
www.stallion-engine.com

NOTE:
DRAWINGS SUBJECT TO CHANGE WITHOUT NOTICE

259 HP DIESEL ENGINE



Heat Exchanger Cooled, Turbocharged
7.12 Liter, 6 Cylinder Engine



MATERIAL FEATURES & DETAILS

- | | |
|-------------------------------|-------------------------------|
| 1. coolant cap | 16. automatic heater assembly |
| 2. heat exchanger assembly | 17. stub shaft |
| 3. after cooler | 18. starter motor |
| 4. engine pulley guard | 19. air filter |
| 5. engine footings | 20. turbocharger |
| 6. oil pressure sensor | |
| 7. cooling loop | |
| 8. starter solenoid | |
| 9. instrumentation panel | |
| 10. fuel filter | |
| 11. fuel feed pump | |
| 12. oil dipstick | |
| 13. exhaust outlet connection | |
| 14. magnetic pick up | |
| 15. flywheel housing | |

MODEL FC 6300-UL

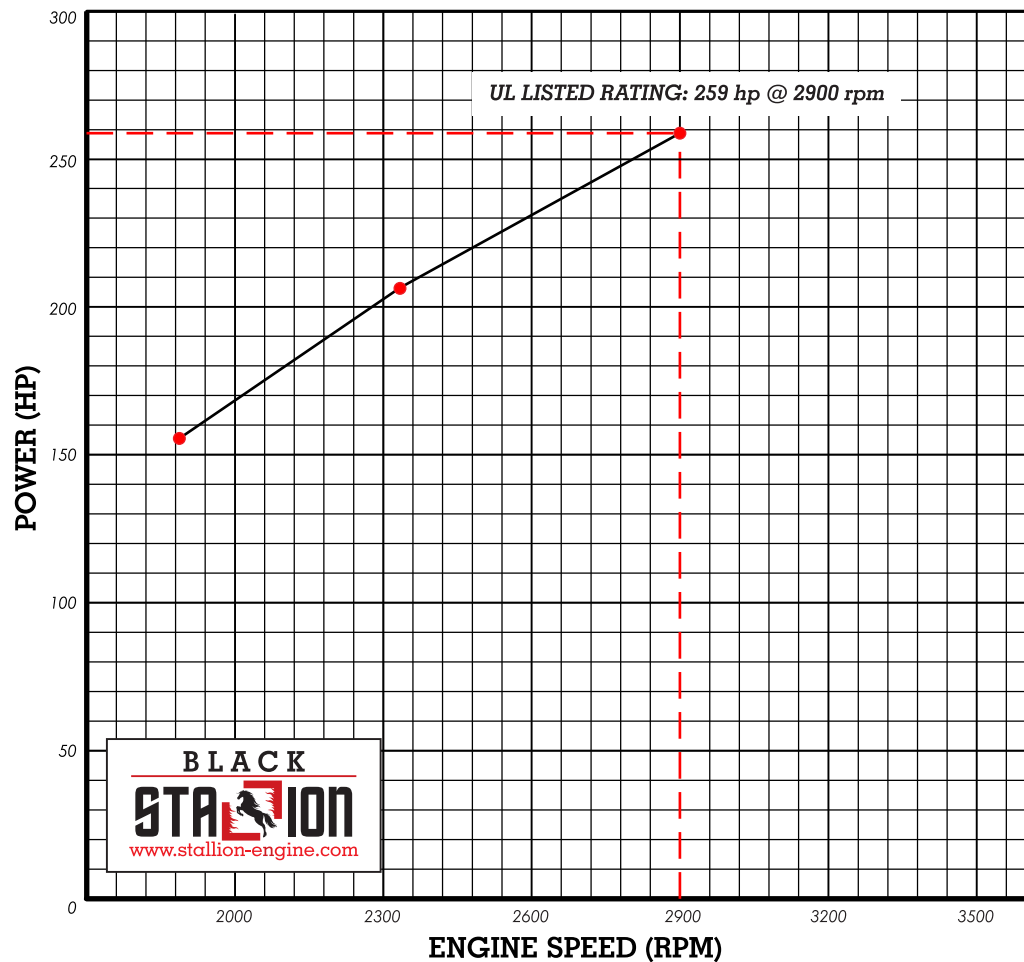
ITEM	DESCRIPTION
Air Filter	Disposable, Dry Type
Alternator	28V, 45 Amps
Coupling	Stub Shaft
Fuel Connections	Flexible, Supply and Return Lines
Fuel Filter	Spin-On Type
Fuel Injection System	In-line type, Gear Driven
Engine Heater	230V-AC, 2250 Watts
Governor Speed	Constant Speed, Mechanical
Heat Exchanger	Water to Water, Shell to Tube type
Instrumentation Panel	Tachometer, Hourmeter, Water Temperature, Oil Pressure and Two (2) Voltmeters
Lube Oil Filter	Spin-On Type
Manual Start Control	On Instrument Panel
Overspeed Control	Electronic with Reset and Test on Instrument Panel
Raw Water Solenoid Operation	Automatic from Fire Pump Controller and from Engine Instrument Panel
Stop Solenoid	24V-DC Energized to Stop
Starters	TWO (2) 24VDC
Throttle Control	Adjustable Speed Control



MODEL FC 6300-UL

Heat Exchanger Cooled, Turbocharged
7.12 Liter, 6 Cylinder Engine
259 HP Diesel Engine

PERFORMANCE CURVE



NOTE:
FOR USE IN FIRE PUMP APPLICATIONS ONLY.

ENGINE SPECIFICATION

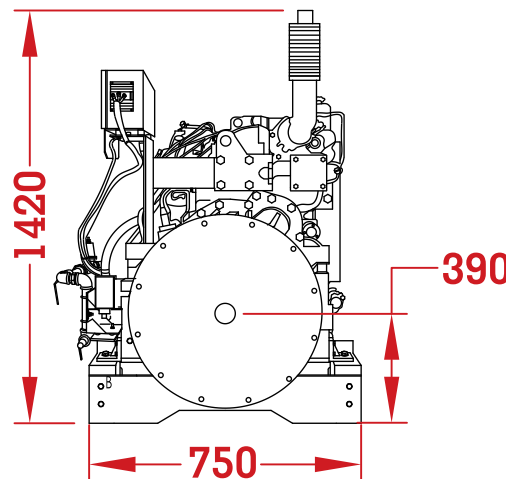
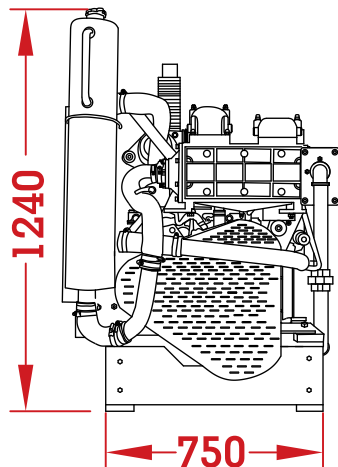
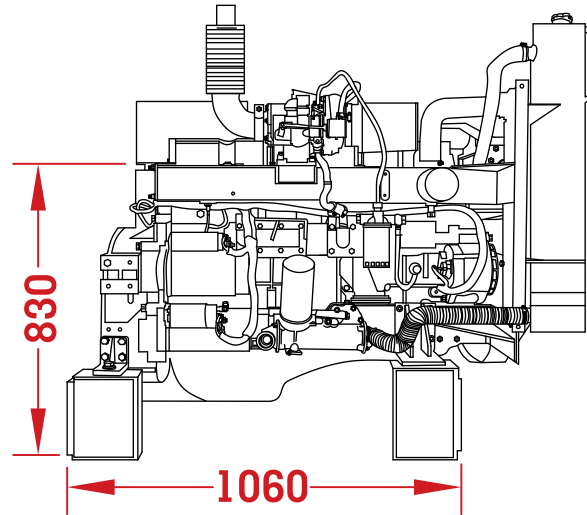
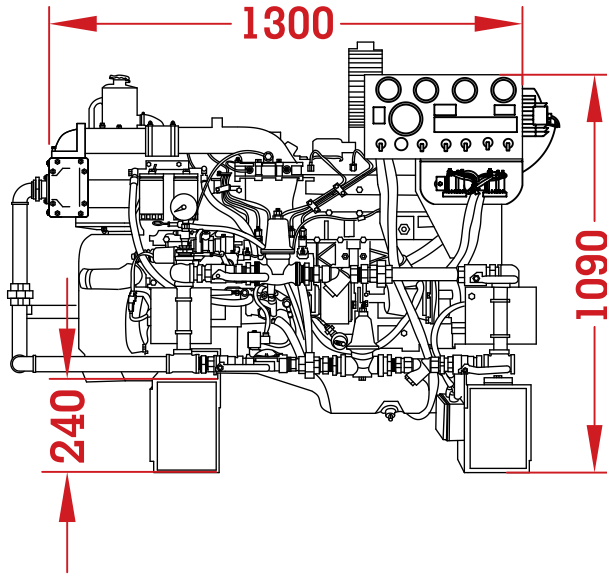
ITEM	DESCRIPTION
Speed	2900 RPM
Rated Power	259 HP
Number of Cylinders	6
Aspiration	Turbocharged
Rotation*	Clockwise
Weight – kg (lb)	1000 kg. (2204.62 lb)
Dimensions L x B x H	1500 mm x 940 mm x 1050 mm
Compression Ratio	16.8 : 1
Displacement	7.127 L
Engine Type	4 Stroke Cycle - Inline Construction
Bore & Stroke	110 mm X 125 mm
Fuel Consumption	60.206 Kg./Hr
Voltage	24 VOLTS
Exhaust Temperature	≤ 480°C
Back Pressure	Not more than 15 Kpa
Raw Water Inlet Size	1 inch
Max. Raw Water Pressure	60 psi
Min. Raw Water Flow	51 gpm
Water Jacket Heater Size	2250 W, 240 VAC

* ROTATION VIEWED FROM FRONT OF ENGINE

- Each engine is factory tested to verify power and performance.
- Engines are to be used for stationary emergency standby fire pump service only.
- Engines are to be tested in accordance with NFPA 25.
- Engines are rated at standard SAE conditions of 29.61 in. (752.1 mm) Hg barometer and 77°F (25°C) inlet air temperature [approximates 300 ft (91.4 m) above sea level] by the testing laboratory (see SAE Standard J 1349).
- A deduction of 3 percent from engine horsepower rating at standard SAE conditions shall be made for diesel engines for each 1000 ft. (305 m) altitude above 300 ft. (91.4 m)
- A deduction of 1 percent from engine horsepower rating as corrected to standard SAE conditions shall be made for diesel engines for every 10°F (5.6°C) above 77°F (25°C) ambient temperature.

MODEL FC 6300-UL

Heat Exchanger Cooled, Turbocharged
7.12 Liter, 6 Cylinder Engine
259 HP Diesel Engine



NOMENCLATURE	FC 6300-UL		
	STALLION BASE MODEL	NO. OF CYLINDERS	UL LISTED

BLACK
STALLION

www.stallion-engine.com

*NOTE:
DRAWINGS SUBJECT TO CHANGE WITHOUT NOTICE*



BLACK

STALLION
www.stallion-engine.com

