



KCB, 2CY

KCB, 2CY Gear oil pump

Summary

KCB, 2CY type gear oil pump is horizontal rotary pump. Working pressure is generated by the two mutually meshing gears. This pump is suitable for conveying a variety of liquid lubrication. E.g.: Crude oil, diesel oil, lubricants, oil-type liquid. Copper gear can be used for transportation of low flash point liquid. E.g.: Gasoline,

benzene. Stainless steel type is suitable for weak corrosive liquid and beverage. Normally temperature of liquid should not be over 70°C. High temperature material can resist liquid with temperature $\leq 300^{\circ}\text{C}$

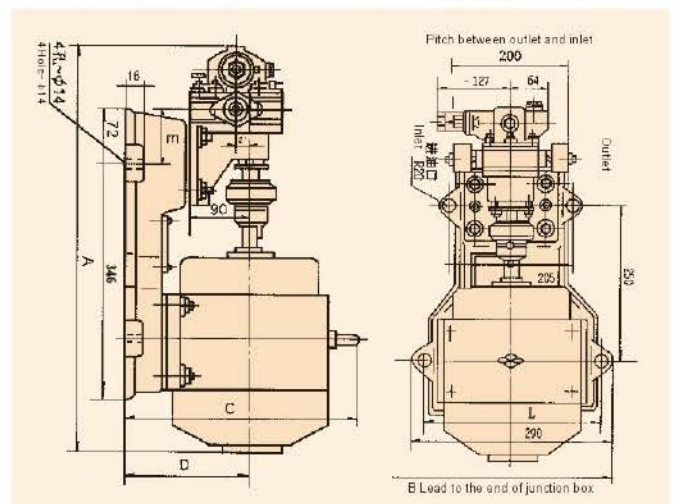


0.33

Specification performance data table

Model	Capacity (L/min)	Pressure (MPa)	Vacuum (-MPa)	Diam (Inch)	Eff. (%)	Power (kW)	Speed (r/min)
KCB-18.3 (2CY-1.1/14.5-2)	18.3	1.45	0.05	3/4"	≥ 85	1.5	1400
KCB-33.3 (2CY-2/14.5-2)	33.3	1.45	0.05	3/4"	≥ 85	2.2	1420
KCB-55 (2CY-3.3/3.3-2)	55	0.33	0.05	1"	≥ 85	1.5	1400
KCB-83.3 (2CY-5/3.3-2)	83.3	0.33	0.05	1 1/2"	≥ 85	2.2	1420
KCB-133.3 (2CY-8/3.3-2)	133.3	0.33	0.05	2"	≥ 85	4	1450
KCB-200 (2CY-12/3.3-2)	200	0.33	0.05	2"	≥ 85	4	1450
KCB-200 (2CY-12/6-2)	200	0.6	0.05	2"	≥ 85	5.5	1450
KCB-200 (2CY-12/10-2)	200	1.0	0.05	2"	≥ 85	7.5	1450
KCB-300 (2CY-18/6-2)	300	0.33	0.05	3"	≥ 85	5.5	960
KCB-483.3 (2CY-29/3.6-2)	483.3	0.36	0.05	3"	≥ 85	7.5	1450
KCB-483.3 (2CY-29/10-2)	483.3	1.0	0.05	3"	≥ 85	11	1450
KCB-633 (2CY-38/2.8-2)	633	0.28	0.05	4"	≥ 85	11	960
KCB-960 (2CY-60/3-2)	960	0.3	0.05	4"	≥ 85	18.5	1500
KCB-2000 (2CY-120/3-2)	2000	0.3	0.05	6"	≥ 85	30	750
KCB-2500 (2CY-150/3-2)	2500	0.3	0.05	6"	≥ 85	37	750

Installation data table



Model	Electric motor		A	B	C	D	E	G"	L
	Model	Power							
KCB18.3-2 (2CY-1.1/14.5-2)	Y-90L-4	1.5	583	300	230	130	79	3/4"	230
KCB33.3-2 (2CY-2/14.5-2)	Y-100L1-4	2.2	618	325	285	140	79	3/4"	250
KCB55-2 (2CY-3.3/3.3-2)	Y-90L-4	1.5	588	300	230	130	86.5	1"	230
KCB83.3-2 (2CY-5/3.3-2)	Y-100L1-4	2.2	658	325	285	140	99	1 1/2"	250

Note: Different motors are available according to clients' demand. Hence different capacity and head will result. "P" Denotes gear pump in stainless steel.