



FIRE PUMP ENGINES

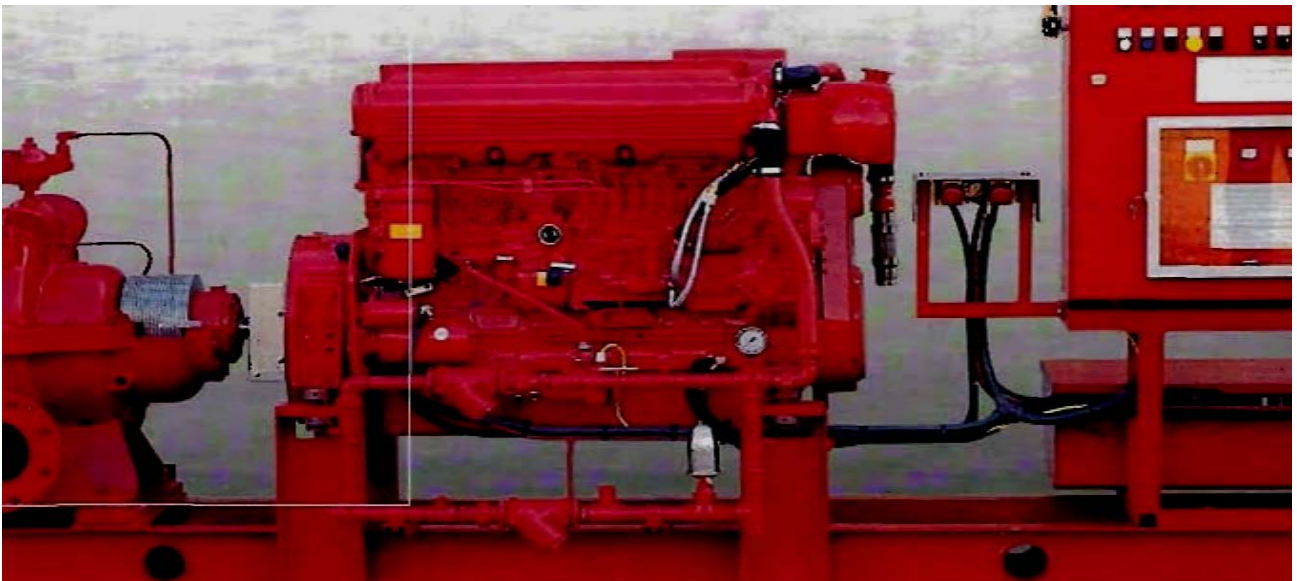
HIGH SPEED MODEL

D480 Y5100

D490 Y5200

 Y6100

From 28kW to 172kW



SMOOTH DIESEL ENGINE

excellent and reliable in fire hydrant

Main Technical Specification

Item	Model					
	D480	D490Q	Y5100	Y5200	Y6100	Y6100T
Cylinders	4	4	4	4	6	6
Bore (mm)	80	90	102	105	102	102
Stroke (mm)	90	100	108	118	118	118
Compression Ratio	18 : 1	18 : 1	17.5 : 1	17.5 : 1	17.5 : 1	17.5 : 1
Max. Torque (N.m)	≥ 96.8	≥ 149.3	≥ 280.5	≥ 352.0	≥ 380.0	≥ 380.0
Total Displacement (L)	1.809	2.540	3.687	4.087	5.785	5.785
Start Motor (V/kW)	12 / 2.5	12 / 2.5	24 / 4.5	24 / 4.5	24 / 4.5	24 / 4.5
Min. Specific Fuel Consume at Full Load (G/kW.H)	≤ 247	≤ 235.3	≤ 277	≤ 230	≤ 215	≤ 220
Speed Range (rpm)	2200 ~ 3200	2200 ~ 3200	2200 ~ 3200	2200 ~ 2900	2200 ~ 2900	2200 ~ 2900
1 Hr Power (kW) at 3000rpm	28	42	68	90	130	172
Cont. Rated Power (kW) at 3000rpm	25.2	39	62	83	119	160
Overall Dimension (mm)	687x494x628	716x530x670	950x630x780	962x638x745	1200x650x850	1200x650x855
Nett Weight (kg)	195	240	390	420	480	505

Engine Equipment

Equipment	Standard
Air Cleaner	Direct Mounted, Washable Indoor Service
Alternator	12 & 24 VDC, 42A, with Belt Guard
Exhaust Protection*	Optional
Coupling	Optional
Exhaust Flex Connection	Optional
Flywheel Housing	SAE#3
Flywheel Power Take Off	11.5 SAE Industrial Flywheel Connection
Fuel Connection	Fire Resistance Flexible Supply & Return Lines
Fuel Filter	Primary Filter with Priming Pump
Fuel Injection System	Stanadyne Direct Injection
Engine Heater*	Optional
Governor Speed	Constant Speed Mechanical
Heat Exchanger	Optional
Cooling	Radiator
Instrument Panel	English Metric & Tachometer, Hourmeter, Water Temp., Oil Pressure & Amperemeter
Junction Box	Integral with Instrument Panel for DC Wiring Interconnection to Engine Controller
Lube Oil Cooler	Engine Water cooled Plane Type
Lube Oil Filter	Full Flow with By Pass Valve
Lube Oil Pump	Gear Driven, Gear Type
Manual Start Control	On Instrument Panel
Overspeed Control	Optional
Raw Water Solenoid Operation	Automatic from Engine controller & from Emergency Local Control
Run-Stop Control	On Instrument Panel with Control Position Warning Light
Run Solenoid	12 & 24 VDC, Energized to Run
Silencer	Optional
Starter	12 or 24 VDC
Throttle control	Adjustable Speed Control
Water Pump	Poly-Vee Belt Drive with Guard

Built-Up Complete
SMOOTHFLO PUMPS AUSTRALIA PTY. LTD.
 13 Heald Road, Ingleburn, NSW 2565
 Australia
 Tel. +61 2 96052288
 Fax. +61 2 96052211

Authorized Distributor in Indonesia
PT. POLA CAKRA MANDIRI
 Jl. Semanan Raya No. 7C, Kalideres, Jakarta 11850
 Indonesia
 Tel. +62 21 5419906 ~ 09
 Fax. +62 21 5419907